

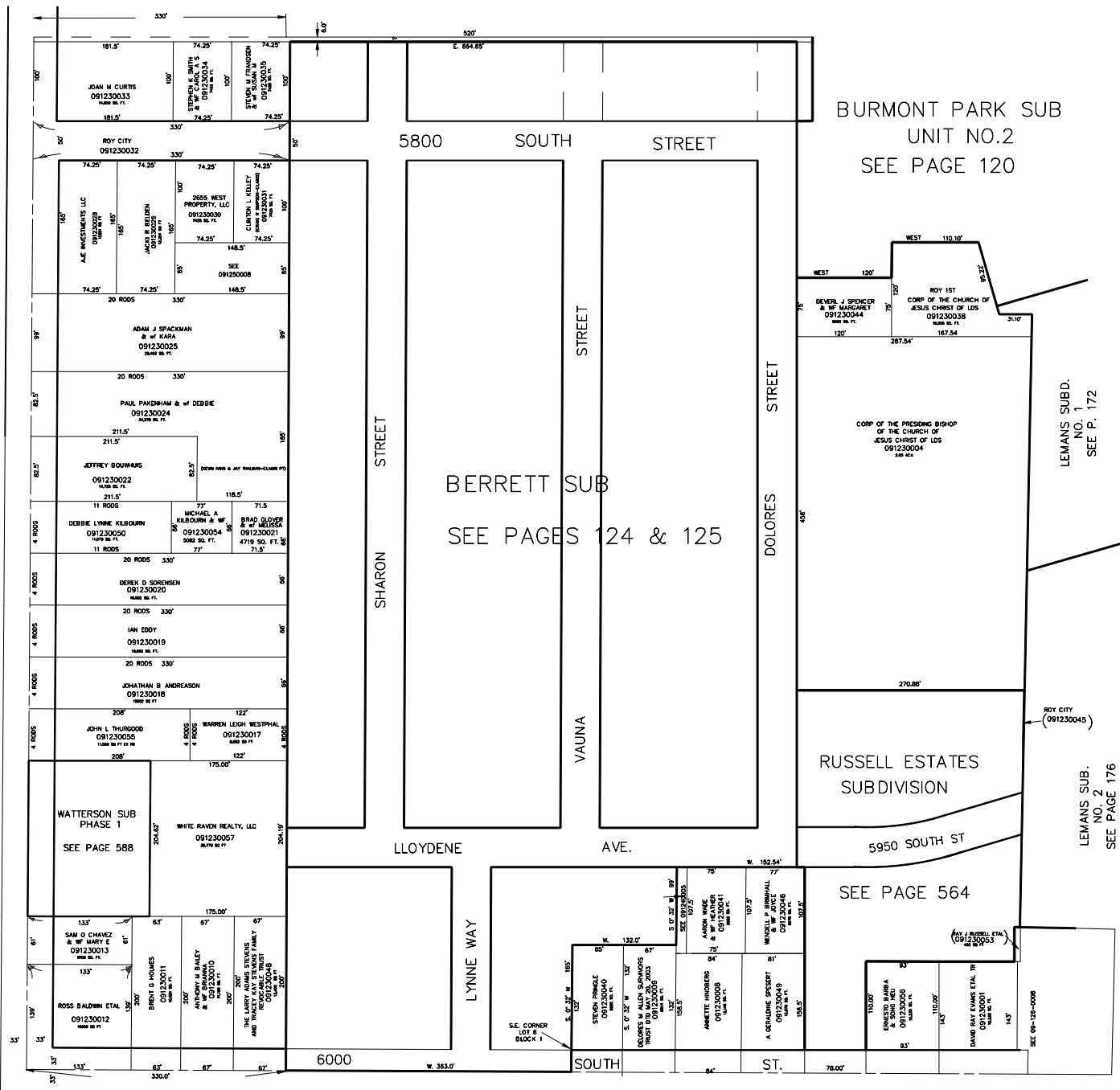
SW 1/4 OF NW 1/4
SECTION 23, T5N, R2W, S.L.B. & M.

ROY CITY

TAXING UNIT: 41

SCALE 1" TO 100'

SEE PAGE 117



BURMONT PARK SUB
UNIT NO.2
SEE PAGE 120

BERRETT SUB
SEE PAGES 124 & 125

RUSSELL ESTATES
SUBDIVISION

SEE PAGE 564

LEMANS SUB.
NO. 1
SEE P. 172

LEMANS SUB.
NO. 2
SEE PAGE 176

SEE PAGE 85

SEE PAGE 588

SEE PAGE 139